



New Hampshire Public Television is New Hampshire's only statewide, locally owned and supported public television network. NHPTV is a trusted and valued resource that inspires Granite Staters through high-quality programs and services that entertain and spark curiosity. The station offers unbiased news and public affairs, arts and culture, entertainment, and educational resources that serve thousands of children, parents, teachers, and viewers of all ages. NHPTV produces and delivers programs and services that reflect the needs, issues and interests important to its audiences and that have impact well beyond the broadcast.



LOCAL VALUE

NHPTV provides a unique service to the residents of New Hampshire and Northern New England. As a multi-platform media and educational organization with a mandate to serve the public, NHPTV meets the needs and interests of its audiences on-air, online, on the go, and in the community. For 55 years, the station has provided commercial-free, entertaining and enriching programming that engages minds, connects communities, and celebrates New Hampshire. NHPTV also offers interactive online resources that complement its locally focused programming, and outreach, education and engagement initiatives. Beyond its award-winning local and PBS programming, NHPTV provides the technology for a high-tech public safety communications infrastructure.

KEY SERVICES

Local Productions

Local programming on NHPTV reflects the needs, interests and concerns of Granite State residents. In FY14, our local productions included *Windows to the Wild*, *Granite State Challenge*, *Counting on Birds*, *Changing Aging in the Granite State*, *American Graduate Day*, and the *NH Authors Series*.



Willem Lange hosts our award-winning *Windows to the Wild* series (photo left, and above with videographer Steve Giordani).

WINDOWS TO THE WILD

Windows to the Wild is NHPTV's most watched local program. Hosted by avid outdoorsman and storyteller Willem Lange, *Windows to the Wild* takes viewers on an outdoor adventure of discovery. From hiking to paddling to soaring the thermals on a hang glider, Will gives viewers the opportunity to discover the wild side of Northern New England. Season 9's episodes included war veterans "walking off the war" along the Appalachian Trail; a blind

Board of Directors 2013-2014

Jeffrey Gilbert
Chair
W.J.P. Development, LLC

Katherine Wells Wheeler
Vice Chair
Retired

Lois Haskins
Treasurer
LGH Consulting

Ronald L. Abramson
Secretary
Abramson Immigration
Solutions

Mark H. Collin
Immediate Past Chair
Unitil Corp.

William A. Barker
Retired

Richard T. Chagnon
PSNH

Colleen T. Chen
Pilot

Marjorie Chiafery
Merrimack School District

Kathy Eneguess
White Mountains
Community College

Marilyn Higgins Forest
Real Estate Management

Erin Hennessey
Certified Public Accountant

Edward MacKay
NH Division of Higher
Education Director

James T. McKim
HP Learning Program
Manager

Sean O'Kane
Winward Partners

Zachary Slater
The Slater Group

John Swope
Retired

Peter A. Frid
President and Chief
Executive Office

hiker and his dog who climbed all 48 of New Hampshire's 4,000 footers; stories of famed haunted hikes; and Mt. Greylock, where Herman Melville was inspired to write *Moby Dick*. *Windows to the Wild* inspires countless fans to

COUNTING ON BIRDS

Counting on Birds, the fourth in a series of grant-funded *Windows to the Wild* bird documentaries, premiered in November 2013. The film explores the National Audubon Society's Christmas Bird Count



The Pinkerton Academy team from Derry won the 2014 Granite State SuperChallenge, as well as the NH-MA Governor's Cup match.

submit stunning testimonials about the impact the show has had on their lives.

nhptv.org/windows

GRANITE STATE CHALLENGE

2014 marked the 30th season of NHPTV's longest-running production, *Granite State Challenge*. GSC is a spirited high school quiz show where academically talented New Hampshire high school teams compete against other schools. The goal is to provide the students with the opportunity to generate school spirit and pride similar to their athletic peers. In November 2013, NHPTV held its Super Sunday qualifying event at Plymouth State University where 51 NH high schools competed for a spot. The top 16 teams appeared on the televised season of *Granite State Challenge*. Pinkerton Academy, the winner of the 2014 *Granite State SuperChallenge*, capped off the season by beating the winner of WGBH's High School Quiz Show in the second annual NH-MA Governor's Cup Challenge. nhptv.org/gsc

and its importance to migratory New England birds and their conservation. Host Willem Lange traveled to Cuba, Ecuador, Maine, and Keene and Errol, NH, to meet people dedicated to birds and this census. Keene was one of the first locations for the inaugural count in 1900.

In the fall, NHPTV embarked on an ambitious community engagement plan and held five public screenings of *Counting on Birds* around the state, with representatives of NH Audubon and National Audubon participating in discussions at the screenings.

CHANGING AGING IN THE GRANITE STATE

NHPTV partnered with AARP-New Hampshire to present *Changing Aging in the Granite State*, a series of programs that covered a variety of topics including consumer fraud, long-term care, wise use of medicine, financial security and living well. In FY14, additional segments aired about financial security and fighting fraud, Social Security and health care. The segments were recorded with a studio audience who participated with questions. NHPTV hosts a website that includes video of each episode and a list of resources. nhptv.org/aging

AMERICAN GRADUATE DAY

American Graduate: Let's Make it Happen is a national public media initiative supported by the Corporation for Public Broadcasting, designed to help communities implement solutions to the dropout crisis in America. While New Hampshire has one of the lowest high school dropout rates in the country, it is still a concern. As part of the national broadcast of *American Graduate Day* programming, NHPTV presented conversations with six New Hampshire organizations that work to keep students in school and engaged in learning.

Representatives and participants from the NH Depart-



Attending the *Counting on Birds* Concord screening (clockwise): Willem Lange, program host; Clara Butler, Butler Foundation; Peter Frid, NHPTV CEO; Michael Good, Downeast Nature Tours; Geoff LeBaron, Audubon Christmas Bird Count Director; Pam Hunt, NH Audubon; Phil Vaughn, producer; Steve Giordani, videographer. nhptv.org/birds

FY2014
JULY 1, 2013 - JUNE 30, 2014

New Hampshire Public Television
**REPORT TO THE
COMMUNITY**

ment of Education; Big Brothers Big Sisters; NH After School Network; City Year; Eagle Academy at North Conway; and Timberlane Regional High School were featured.

NEW HAMPSHIRE AUTHORS SERIES

The *New Hampshire Authors Series* features writers who live, summer, teach, or were born in New Hampshire. Yankee writer and humorist Rebecca Rule talks with poets, fiction and nonfiction writers, and journalists about the art and craft of writing in conversations before audiences at the University of New Hampshire's Dimond Library. The interviews are recorded by New Hampshire Public Television for broadcast and online viewing. The series is free and open to the public.

Authors featured in FY14 include children's books and nature author Eric Pinder, Pulitzer Prize-winning poet Sharon Olds, and Mike Pride, editor emeritus of the *Concord Monitor* and author of books on NH history. nhptv.org/authors

LOCAL IMPACT

Community and Education Initiatives

COMMUNITY CINEMA

FY14 marked NHPTV's fourth year participating in the Community Cinema series. In partnership with Red River Theatres in Concord, an independent, nonprofit movie theater, Community Cinema is a series of free monthly screenings of films from the Emmy Award-winning PBS series *Independent Lens*. More than 150 people viewed the films and participated in the discussions that followed. Community Cinema is a unique opportunity for community members to come together to learn about and discuss key social issues facing the world today.

DISCOVER WILD NH DAY

Discover Wild NH Day is an event sponsored by the NH Fish and Game Department and the NH Department of Environmen-

tal Services in Concord, and NHPTV participates in it every year. The event features exhibits from the state's environmental and conservation organizations. This year more than 5,000 people attended. NHPTV's educational outreach team participated in this family event and promoted online resources *Natureworks* and *Wildlife Journal, Jr.* and showed its outdoor adventure program, *Windows to the Wild*.



NHPTV-PBS KIDS WRITERS CONTEST

NHPTV has participated in the PBS KIDS Writers Contest for more than two decades. It is part of NHPTV's commitment to promoting literacy and a love of reading, writing, and creative expression. Children in grades K-3 are asked to write and illustrate an original story.

The winning stories from each grade level are placed on the contest website (nhptv.org/kidswrite). Additionally, the first-place winners are featured on NHPTV reading their stories.

Poetry about the seasons, a ring-toss game between a cat and a moose, and a day of skiing

were among the subjects of winning stories in this year's contest. Over 450 creative entries were received, and 85 stories were chosen for first place, second place, third place and honorable mention recognition. Each child who enters a story receives a personalized email from NHPTV with positive comments about their story.



NHPTV's first-place winner for third grade also won the national PBS KIDS Writers Contest. Third grader Jishnu D. of Dover, NH, wrote a collection of poems called *A Humble Book of Poems - With a Little Seasoning*. nhptv.org/kidswrite

PBS LEARNING MEDIA

PBS LearningMedia™ is an online repository of classroom-ready, curriculum-targeted digital resources that offers the best of public media for classrooms including videos, interactives, activities, and lesson plans free to educators everywhere. The site is a national PBS initiative customized locally for each public television station. It provides educators with

The NHPTV-PBS KIDS WRITERS CONTEST is part of NHPTV's commitment to promoting literacy and a love of reading, writing, and creative expression in children. Pictured: the 2014 winners at the awards ceremony in May at the Currier Museum in Manchester.

"When my child entered her story last year, she was so thrilled to see it online that she couldn't wait to show her friends...Since then she has organized a writers' group consisting of friends and classmates...Thank you, NHPTV!"

strategies, tools, and professional development resources to fully utilize digital learning. PBS LearningMedia™ offers schools, districts, and states a cost-effective solution for seamless media integration and customization, including state standards alignment, analytics and content management. nhptv.pbslearning.org

FY2014
JULY 1, 2013 - JUNE 30, 2014
New Hampshire Public Television
**REPORT TO THE
COMMUNITY**



EDUCATIONAL SERVICES

Public television is unique in that it provides a free media service that encourages a life-long love of learning. Educational media from PBS and NHPTV helps provide children with a solid foundation for success in school. Further, NHPTV offers an abundance of educational workshops and resources for parents and teachers free of charge. NHPTV's educational resources serve nearly 200,000 thousand children annually, and align with NH education curriculum standards. NHPTV also promotes media literacy development to help parents and teachers assist children in becoming more savvy consumers of TV and electronic media.

FAMILY NIGHTS

NHPTV extends the value of PBS and local television

programs by offering a variety of Family Nights to NH schools, libraries, and other community organizations. These nights cover STEM (Science, Technology, Engineering, and Math), Literacy, Health (through NHPTV's LiveFIT NH initiative), and the arts. Families with children in grades K-5 are invited to attend, and participate in hands-on, interactive learning stations. In FY14, Family Nights explored color, optical illusions and surface tension through creative, hands-on projects and activities parents can do with their children.

NHPTV'S MESY initiative (Math, Engineering, Science and YOU!) is part of the STEM Family Nights. MESY is focused on getting kids and parents excited about the STEM subjects. NHPTV reached over 1,600 parents, more than 5,100 children (directly and indirectly) and over 200 educators in FY14 through Family Nights.



As part of NHPTV's educational mission, we host interns and work study students, teaching them how to use cameras, interview and edit. Pictured here: Endicott College student Erik Mangrum and producer Adam Frost.

PLANET GRANITE

Planet Granite is a multi-media community engagement initiative that focuses on raising awareness, presenting possible solutions, and highlighting activities that advance sustainability practices. *Planet Granite* integrates several multi-media project

components including broadcast elements, an interactive website and educational engagement activities. Through grant funding and corporate support, NHPTV has produced a micro-series of one-minute message breaks that profile individuals, schools, businesses and communities who are living and working in a more

SPECIAL EVENTS



Granite State Challenge host Jim Jeannotte led a spirited mock GSC match between guests at the State of the Station event and the 2014 GSC semi-finalist team Portsmouth Christian Academy.

STATE OF THE STATION

NHPTV held its second annual State of the Station event in June. Members, sponsors and supporters of NHPTV came for an evening focused on the station's impact "Beyond the Broadcast."

Using the 30th anniversary of *Granite State Challenge* as a theme, guests learned about the history of the show and its educational aspects, and heard from longtime host Jim Jeannotte. The grand finale was a mock game between audience volunteers and the GSC finalist team. Guests toured the station and learned how to access NHPTV programming and resources through TV and online technology and devices. At the educational outreach and engagement station, guests saw how NHPTV's educational initiatives use PBS children's programming as a springboard to exploring other ideas and concepts. The reach of NHPTV's statewide emergency alert system also was shown.



NHPTV AUCTIONS

The *41st NHPTV Spring Auction*, a live 10-day television event, was held April 26 - May 4. It is the station's largest fundraiser,

bringing in over \$300,000 to support the programs and services NHPTV delivers to audiences around the Granite State. It is also NHPTV's largest and most visible community event, connecting NHPTV with generous donors and buyers.

With more than 750 volunteers working behind the scenes, the Spring Auction generates community spirit and palpable energy at the NHPTV Broadcast Center in Durham. The Auction promotes thousands of small and large regional businesses, local artists, restaurants, vacation destinations, and recreational opportunities. Local radio and TV personalities, community leaders and long-time friends of NHPTV serve as guest auctioneers.



Cliff Blake, the voice of NHPTV, also is a long-time Auction host. He makes the Spring Auction phone bank ring with bids!

FY2014
JULY 1, 2013 - JUNE 30, 2014

New Hampshire Public Television
**REPORT TO THE
COMMUNITY**

environmentally sustainable way. Segment topics include rain gardens, law alternatives, farmer's markets, campus waste reduction, and recycling. nhptv.org/planetgranite

"I HAVE A DREAM" VIDEO CONTEST

In honor of Dr. Martin Luther King, Jr.'s legacy, NHPTV sponsored the *I Have a Dream Video Contest*. Students in grades K-12 were invited to create a 30 - 60 second video using a mobile phone, tablet, flip camera or video camera, and describe what Martin Luther King Jr.'s dream, life, work, or words meant to them. The contest ran for five months and served as an educational engagement opportunity for families, and social studies educators. Students could submit as a class, a group, or as an individual. Winning entries were posted online and aired

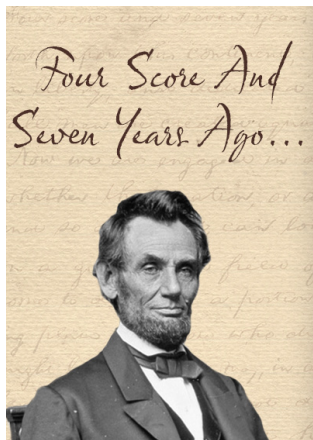
on NHPTV. The contest was underwritten by Citizens Bank. nhptv.org/dream

THE ADDRESS

New Hampshire is Ken Burns' home, and NHPTV is always excited when he has a new documentary. NHPTV participated in a national PBS effort to encourage everyone in America to record their recitation of Abraham Lincoln's famous speech.

The campaign was inspired by the subject of Burns's film *The Address*, which tells the story of a school in Putney, VT, where each year students are encouraged to memorize, practice and recite the Gettysburg Address.

NHPTV invited schools, organizations, and individuals to recite and record the Gettysburg Address and capture on a phone or camera, and upload it to the national *Learn the Address* website.



NHPTV submitted 39 videos to the national site, with schools, individuals, an Abraham Lincoln puppet, town librarians, and NH Governor Maggie Hassan submitting entries. nhptv.org/address

The *NHPTV Online Holiday Auction* celebrated its 5th year in FY14 and has proven to be a successful fundraising avenue for NHPTV. It is run entirely online. It is also smaller, with approximately 800 items donated by local, regional and national businesses and a fundraising goal of \$75,000. Like the Spring Auction, it is facilitated with the help of volunteers. The Online Holiday Auction attracts bidders from all over the country. nhptv.org/auction

A TRIP TO ICELAND WITH WILLEM LANGE

NHPTV embarked on a new fundraising venture in FY14, offering Willem Lange and *Windows to the Wild* fans an opportunity to spend 10 days exploring Iceland with him. Working with an international tour company, NHPTV targeted major donors and viewers with a desire to travel. The trip, which had 25 travelers, raised funds for the station, awareness of NHPTV and its travel-related programming, and was a donor cultivation opportunity. A NHPTV videographer went on the trip to produce a special *Windows to the Wild* episode hosted by Will Lange.



PASSPORT CRAFT BEER & FOOD PAIRING EVENT

September 2013 marked NHPTV's 5th annual *Passport Craft Beer and Food Pairing Tour*. Held on the grounds of Strawberry

Banke Museum in Portsmouth, the event is a fundraiser and a friendraiser for both organizations. Passport sells out every year months in advance. More than 1,000 guests walk the grounds and enjoy food from local restaurants paired with special craft beers. Through this event, NHPTV reaches beyond its traditional viewing audience. nhptv.org/passport



NHPTV CAR RAFFLE

The NHPTV Car Raffle is part of NHPTV's expanded fundraising strategy. In September 2013, NHPTV held its second car raffle, and partnered with a NH car dealership to offer a prize of \$25,000 towards a vehicle of their choice from the dealer. Tickets were \$50 apiece or three for \$100. The station heavily promoted the raffle on air, radio, online, via social media, and ads.

2013-2014 Community Advisory Board

Justine Vogel, Chair
RiverWoods at Exeter

Dr. Kristen Nevious, Chair
Marlin Fitzwater Center for Communications

Steve Ahnen
NH Hospital Association

Thomas Blinkhorn
Economic Development Consultant

Janice Crawford
Mt. Washington Valley Chamber of Commerce

Mary DeVries
Wolfeboro Chamber of Commerce

Law Feldstein
Retired

Joan Goshgarian
NH Business in the Arts

Brian Hoffman
Community Action Program Belknap-Merrimack Counties, Inc.

Pamela LaFlamme
City of Berlin

Colleen Mainville
US Forest Service

FY2014
JULY 1, 2013 - JUNE 30, 2014

New Hampshire Public Television
REPORT TO THE COMMUNITY

“Watched with interest tonight’s episode on Windows to the Wild on Tuckerman Ravine. The program brought back great memories of skiing Tuckerman with my dad in the spring of 1969. Look forward to watching more NHPTV.”

Our deepest appreciation to FY 14 Supporters

Corporate

- Amoskeag Beverages
- Art with a Splash
- Attitash Resort
- BAE Systems
- Basix
- Bauer
- Beaver Productions
- Bellas Casual Dining
- Binnie Media
- Birch Hill Terrace
- Blue Seal Stores
- Boston Red Sox
- Bottomline Technologies
- Capitol Center for the Arts
- Casino Ballroom
- Centrix Bank
- CHaD
- Children’s Museum of NH
- Chinburg Properties
- Cirtronics
- Citizens Bank
- Cog Railway
- Conway Scenic Railroad
- Cranmore
- Cross Insurance Agency
- Currier Museum
- Dartmouth Hitchcock
- DebNDukes
- DF Richard
- Dyn
- EnviroVantage
- Federal Savings Bank
- Fidelity Investments
- Financial Planning Association
- Fisher Cats
- Food & Health Forum
- Foster’s Daily Democrat
- Granite State Growler Tours
- Grappone Automotive
- Green Alliance
- Heinemann Publishing
- Hit Entertainment
- Hitchiner Manufacturing
- Horizon Beverage
- Keasarge
- Keene Sentinel
- Kendal At Hanover
- Lake Sunapee Bank
- LaValley Building Supply
- League of NH Craftsmen
- Leddy Center
- Lindt and Sprungli
- Liquid Planet Water Park
- Littleton Coin
- LL Cote
- Lowell Memorial Auditorium
- Lowell Summer Music Series
- Manchester Monarchs
- Manchester Union Leader
- Markem-Imaje
- McLean Communications
- Measured Progress
- Meetinghouse @ Riverfront
- Millennium Integrated Marketing
- Milne Travel
- Monadnock Water
- Mountain Club at Loon
- Mt. Washington Accomodations
- Mt. Washington Chamber of Commerce
- Mt. Washington Cruises
- Nature Conservatory
- New England Womens Leadership Institute
- New Horizons
- NH Conference on Aging
- NH Crafts Fair
- NH Film Festival
- NH Grand
- NH Lottery Commission
- NH Preservation
- NH Travel Council
- NH Union Leader
- NHAIA
- NHNEA
- NNE Financial Planners
- North Conway Lodging
- North Country Tractor
- Northeast Delta Dental
- Northern New England Coca Cola
- Omni Mt. Washington
- Orr & Reno Attorneys At Law
- Palace Theatre
- Parcel Room
- Pats Peak
- Pax World Mutual Funds

- Plymouth State University
- Portsmouth Philharmonic Orchestra
- Portsmouth Sign
- Proulx Oil and Propane
- Ragged Mountain Resort
- RAM Printing
- Rath Young and Pignatelli, PC
- Red River Theatres
- Reeds Ferry Sheds
- Regency Mortgage
- Retirement Financial Center
- Rinks at Exeter
- River Radio Network
- RiverWoods
- Rochester Country Club
- Rocky’s Ace Hardware
- Santa’s Village
- Seacoast Media Group
- Seacoast Repertory Theatre
- Seacoast Science Center
- Senior Beacon
- Service Credit Union
- Settlers Green
- SFC Engineering
- Shaheen Finney Bass
- Society for Protection of NH Forests
- Stay Work Play NH
- Stibler & Associates
- Story Land
- Subaru of New England
- Taste of the Seacoast
- The Music Hall
- Unitil Corp.
- Upper Valley Magazine
- Urban Tree
- University System of New Hampshire
- Visit NE.com
- Washington St Catering
- Wentworth Douglass Hospital
- WGBH 89.7
- WZID
- Yankee Magazine

- New Horizons Computer Learning Centers
- Nashua, NH
- NH Magazine McLean Communications
- Manchester, NH
- Nippo Lake Golf Club, Barrington, NH
- Nvest Financial Group LLC
- Portsmouth NH
- Omni Mount Washington Resort
- Bretton Woods, NH
- Photography by Jane Lydick Staid
- Danville, NH
- Photosmith Dover, NH
- Port City Veterinary Referral Hospital
- Portsmouth NH
- Reeds Ferry Sheds, Hudson, NH
- Relief Lightship Baskets, Marlborough NH
- Rock ‘n’ Roll Fantasy Camp, Las Vegas, NV
- Royal Crest Motor Inn, Hampton, NH
- Seaside Village Resort, N. Hampton, NH
- Sheraton Harborside, Portsmouth, NH
- Shinobi Martial Arts, Plaistow, NH
- Snowflake Inn, Jackson, NH
- Sounds Spectrum DJ’s, Dover, NH
- Southern NH University Continuing Education Division, Manchester, NH
- Southern NH University-School of Business
- Hooksett, NH
- Springer’s Jewelers, Portsmouth, NH
- Squam Lakes Camp Resort, Holderness, NH
- St. Gregory Luxury Hotel & Suites, Washington DC
- Star Island Corporation, Portsmouth, NH
- Tariki Limited LLC, Meriden, NH
- Terrapin Tours, North Woodstock, NH
- The Granite YMCA, Manchester, NH
- The Horny Toad, St. Maarten
- The Omni Parker House Hotel, Boston, MA
- The Ultimate Bath Stores / The Granite Group, Concord, NH
- The Works Health & Fitness Center, Somersworth, NH
- Westin Diplomat Resort & Spa, Hollywood, FL
- White Mountains Attractions Association
- North Woodstock, NH
- Windows to the Wild, Durham, NH
- WOKQ 97.5 FM, Dover, NH
- Woodward’s Resort, Lincoln, NH
- WPKQ 103.7 FM, Dover, NH
- WSHK The Shark, Dover, NH
- Your New England Toyota Dealer, Dedham, MA
- Yria Hotel Resort, Paros



Auction Superboard

- A New You Center for Hypnosis, Dover NH
- Adaptations Unlimited, Newington, NH
- Adventure Suites, North Conway, NH
- Anonymous (9)
- Appliance Warehouse, Seabrook, NH
- Architectural Salvage, Inc., Exeter, NH
- Arrowhead Farm, Newburyport, MA
- Attitash Grand Summit Hotel & Conference Center, Bartlett, NH
- Autodesk Inc., Manchester, NH
- Azores Express - SATA, Concord, NH
- Beacon Hotel and Corporate Quarters
- Washington DC
- Better Hearing Center, Concord, NH
- Bike the Northern Rail Trail, E Andover, NH
- Cannon Mountain, Franconia, NH
- Circle 9 Ranch Campground, Epsom, NH
- Coastal Inflatables, LLC, Stratham, NH
- D. F. Richard Energy, Dover, NH
- Eckman Engineering LLC Portsmouth, NH
- Executive Service Corps., Hampton, NH
- E-Z Docking Solutions, Northwood, NH
- Frame My TV, Haverhill, MA
- Freedom Bath Products, Farmington, NH
- Glass by James Michael & Co., Dayton, OH
- Golf Management Co., Hudson, NH
- Good Fortune Jewelry, Keene, NH
- Harbour Design, Landscape Design and Construction, Durham, NH
- Historic Motor Sports, Candia, NH
- Isles of Shoals Steamship Co. Portsmouth NH
- Jack’s Voice Kittery Point, ME
- K.S.W. Law, Epping, NH
- KD Mason, Greenland, NH
- Land Rover Experience Driving School
- Manchester VT
- Martinhal Beach Resort & Hotel Sagres
- Massage Associates, Barrington, NH
- Master Mac Kay’s Black Belt Academy
- Exeter, NH
- Medallion Healthy Homes Nottingham NH
- Mount Washington College, Manchester NH
- Mountain Club On Loon, Lincoln, NH
- New England School of Auctioneering
- Alstead, NH

Foundation Grants

- Alice J. Reen Charitable Trust
- Anna and Raymond Tuttle Horticulture Fund
- Corporation for Public Broadcasting
- The Fuller Foundation, Inc.
- Lincoln Financial Foundation
- New Hampshire Charitable Foundation
- Roy A. Hunt Foundation
- WETA

Bequests

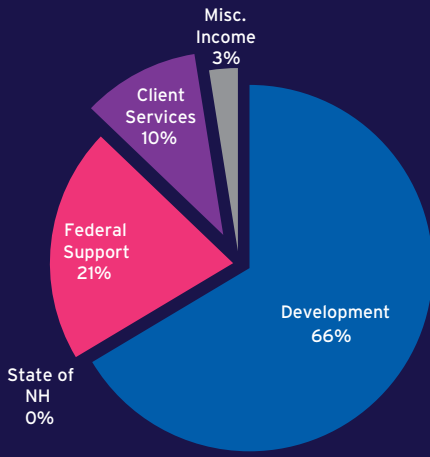
- Naia L. Conrad
- George H. Graff Trust
- Athena Theodosopoulos

Named Funds

- K. Bailey Fund
- Clement Fund
- Marie Schmidt Gerrato Memorial Fund
- Ruth Ann Stearns Fund
- Athena Liapis Theodosopoulos Educational Fund

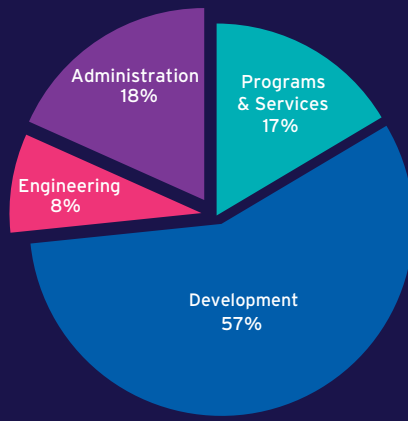
FY2014
JULY 1, 2013 - JUNE 30, 2014

New Hampshire Public Television
REPORT TO THE COMMUNITY



FY14 REVENUE

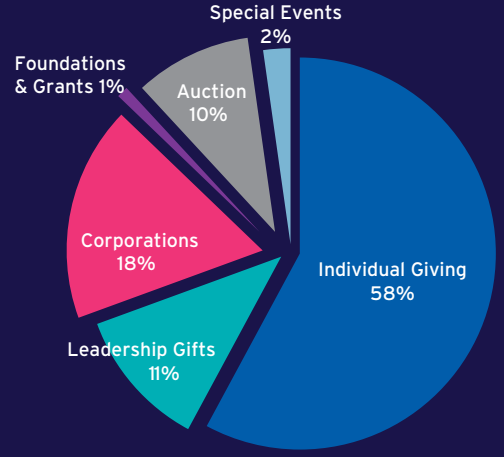
Development	\$3,880,786
State of NH	0
Federal Support	1,210,779
Client Services	603,190
Misc. Income	147,256
Total	\$5,842,011



FY14 EXPENSES*

Programs & Services	\$1,105,748
Development	3,822,280
Engineering	559,487
Administration	1,229,372
Total	\$6,716,887

*Includes depreciation



FY14 DEVELOPMENT GIFTS

Individual Giving	\$2,246,021
Leadership Gifts	401,647
Corporations	689,245
Foundations & Grants	83,000
Auction	373,989
Special Events	86,884
Total	\$3,880,786

* Unaudited



\$1,000 and above

- Mr. & Mrs. Bruce Alvarez
- Kenneth & Lynn Austin
- Stephen P. Barba
- Mr. & Mrs. William Barker
- Ms. Judith Batts
- Mr. & Mrs. Peter M. Bealo
- Mary & Mark Behringer
- Carolyn & Randy Benthien
- Brad Benton
- Ms. Sally Billings
- John & Pamela Blackford
- Mr. & Mrs. Q. David Bowers
- Leslie & Richard Buchanan
- The Byrne Foundation
- Richard Chagnon
- Virginia S. Champlin
- Marge & Jim Chiafery
- Mark & Patricia Collin
- Bradford E. and Kathleen D. Cook
- Mr. & Mrs. William Day
- C. Russell de Burlo
- Dawn DeAngelis & Richard Jeffrey
- Robert Dewey & Pamela Van Arsdale
- Ms. Allyson Bodell
- Mr. Francis J. Doherty
- Doris L. Benz Trust
- Ann F. Doucet
- Maureen Dunn-Click
- Ms. Alexis Eaton & Ms. Rayona Eaton
- Kathy Eneguess
- Ms. Adele Q. Ervin
- Dr. & Mrs. Charles S. Faulkner, II
- Robert & Joyce Fieldsteel
- Marilyn H. Forest
- Ms. Susan J. Fox
- Peter & Katherine Frid
- Alphonse Gerrato, Jr.
- Francis & Joan Cicca
- Rep. Jeffrey D. Gilbert & Mrs. Penelope Gilbert
- Betsy Gillin
- Elizabeth W. Gilroy
- Mrs. Kirthi Govindarajan
- Mary Granger
- Joan Granlund
- Mr. David L. Greenewalt
- Zaiga Greenhalgh
- Mr. Stephen Greenwood
- Mr. Alan Grossberg
- Venetia Guerrasio & Tom Stoker
- Mrs. Ann Hackett
- Harold & Margot Haddock
- Mr. & Mrs. Lindley H. Hall
- Mr. & Mrs. Sam Harding
- Judy & Walt Havenstein
- Lucius & Nancy Hill
- Betty & Al Hofflander
- John A. Hubbard
- Badri Hunold
- Marilyn P. Johnson
- Mr. Walter Johnson
- Ms. Nanette Jones
- Ms. Susan Keane
- Patsy & Skip Kendall
- Diane & Fred Kollmorgen
- John M. & Marilyn K. Kucharski
- Lange Rice Charitable Lead Annuity Trust
- Mr. & Mrs. Herb Langer
- Dr. Andrea LeBlanc
- Mr. & Mrs. Alan E. Lewis

- Mr. & Mrs. D. Loring
- Anne Lovett & Stephen Woodsum
- K. L. MacEachern
- Ed & Phyllis MacKay
- Richard & Barbara Maloney
- Marilyn & Don Malpass
- Ms. Pauline Mandravelis & Ms. Faye Mandravelis
- John Marani
- Mrs. Stephany Marchut Lavallee & Mr. Ronald Lavallee
- Jane Maret
- Shirley & Don Mason
- Ms. Susan D. Mayer
- Robin & Chuck McCann
- John McGonagle/ Carter Harrison
- Frank Weeks & Elizabeth Merriam
- Jack Middleton
- Anne D. Milne
- David C. Mores
- Mr. & Mrs. John Moss
- CMH Foundation
- New Hampshire Charitable Trust
- The Nichols Trust
- Doug & Ellen O'Brien
- Mr. & Mrs. William O'Donnell
- Mr. Charles Boyden Ohl
- Mr. Sean O'Kane
- Polly & Hank Parker
- G. Patel
- Ms. Carol A. Pechet
- Mr. Marc Phaneuf
- Phyllis Tilson Piotrow
- Ms. Penny Pitou & Mr. Milo Pike
- Larry & Barbara Pitsch
- Dr. Eva Powers & Dr. James Powers
- Mrs. Ann Preston
- Anita Fund of Northern NH
- Mr. & Mrs. Roger Proulx
- Mr. & Mrs. Frederick Pulitzer
- Mr. & Mrs. James Putnam
- Phyllis & Peter Reed
- David & Celeste Reid
- Lisa Reid
- Steve & Kit Reno
- Mr. & Mrs. Raymond Richard
- Mr. David Rosen
- Mr. David S. Ross
- David & Mary Ruedig
- Hannah L. Russell
- Mr. Lars Rydell
- Maryanne & John Sarro
- Merle & Helen Schotanus
- Mark Scura, D.M.D. & Maureen Redmond-Scura
- Anne S. Segal
- Brian & Terry Shepperd
- Zachary & Nancy Slater
- Barbara C. Smiles
- Sandra Smith
- Mr. & Mrs. James Soucie
- Carl & Judith Spang
- Mr. Paul A. St. Hilaire
- Ms. Kendra E. Stanley
- Bayne Stevenson
- Ms. Elisabeth B. Sturges
- Mr. & Mrs. David M. Sundman
- John F. Swope
- Systems & Communications Sciences, Inc.
- Candace Thayer
- Mr. & Mrs. David Tomlinson
- Bayard & Susan Tracy
- Mrs. William W. Treat
- Patricia L. Valdes
- Mrs. Karlene Wadeigh

- Ms. Anne R. Wardwell
- Katherine Wells
- Wheeler
- Mr. Norman Whitaker & Mrs. Eleanor Whitaker
- Mrs. Lee Whittier
- Frank & Ann Windsor
- Mr. Jessie Wood & Ms. Shawn Fram
- Mr. & Mrs. Woodward
- Mrs. Carol Wright
- Sylvia L. Thayer & J. Philip Zaeder



\$500 and above

- Diane Ackerly
- Mr. Matthew Anderson
- Anne S. Howells Charitable Trust
- Mr. & Mrs. John Appleton
- Mr. & Mrs. Jacques Aquillon
- ASCA
- Mr. Peter D. Athearn
- Cynthia & Tony Bajdek
- Mrs. Jeanette Baker
- Ms. Priscilla Baker
- George & Harriet Baldwin
- Mr. Jay Ballard
- Ms. Marcina J. Barker
- Dr. & Mrs. Michael Barr
- Stephen Bartlett
- Ms. Jacqueline Bastille
- Kate & Gordon Baty
- Dr. & Mrs. Richard Baughman
- Rosa & S. R. Beane
- Carter A. Beck
- Peter & Nancy Beck
- Mr. Todd Benninghoff & Mr. William T. Benninghoff
- Mr. & Mrs. Kenneth I. Bergstrom
- Robin Bernard
- Mr. & Mrs. R. H. Bleiler
- Mr. & Mrs. Thomas Blinkhorn
- Francis M. Blodget, Jr.
- Ms. Mary Jane Bogacki & Ms. Diane Bogacki
- Mr. & Mrs. Allan Bogusz
- Janice Borelli
- Bottomline Technologies Contributions Committee
- Mr. A. Paul Boucher
- Mr. & Mrs. Stephen Boucher
- Ms. Katharine Boynton
- Robin Bransdorfer
- Mr. & Mrs. Bill Breed
- Mrs. Bronwyn Brench
- Mrs. Deanna B. Bresslin
- Mr. & Mrs. Robert Bridgham
- Ms. Wendy Brock
- Mr. Norman Bronzo
- Mr. David Brooks
- Sara Brouillet
- Robert Brown
- Ms. Anne L. Bryan
- Mrs. Donna Bryant
- Janet Buell
- Mr. Gary A. Bullock
- Ms. Meredith Bunting
- Richard Butterfield
- Ms. Julie Byrne
- Ms. Cynthia Cable
- Ms. Lynda Caine
- Mrs. Joan C. Camann
- Mrs. Mary P. Campbell
- Judith Capobianco
- Mr. William Carey
- Ms. Constance Carney
- Mr. Henry Caron
- Mrs. Janet Catalano
- Ms. Joyce Catanzaro
- Christa Cavallo
- Dr. & Mrs. Jerry R. Chamberlin
- Mr. Kerry H. Chandler
- Mr. Hugh Chapin
- Mr. William J. Charland & Ms. Judith M. Pinkham
- Mr. Edward S. Chase, Jr.
- Ms. Colleen Chen
- Sue Chollet
- Mr. Robert Christie
- Ellie Chuang
- Mrs. Sally A. Clark
- Mrs. Karen Clement
- Noele M. Clews
- Mr. William Cochran
- Ms. Priscilla Coffin
- Mr. Matthew Cole
- Mr. & Mrs. Roger Comeau
- Mr. A. Bradford Conant
- Mrs. Joan Connacher
- Mr. Hiram Connell
- Terry & Susie Conner
- Mr. Peter Connolly

FY2014
 JULY 1, 2013 - JUNE 30, 2014
 New Hampshire Public Television
REPORT TO THE COMMUNITY

(Continued from page 7)

Ms. Betty Connor
Mr. David Connor
Wooley S. Conover
Mr. Donald Cooke
Mr. Richard Cornelius & Ms. Judy Reed
Ms. Patricia Coughlin
Mr. Christian Coutis
William Cox
Mr. Robert Craven
Carol Crawford
Dr. & Mrs. Chuck Crawford
Ms. Leslie Crowe
Mr. David Cullenberg
Mrs. Rosalie Cutter
Mr. & Mrs. David Daniels
Mr. & Mrs. R. Dave Stuart & Suellen Davidson
Ms. Joanne P. DeBord
Ms. Deborah Dellorfanio
Mr. Charles E. Dent, Jr.
Mr. Tomie A. DePaola
Mr. John Desmond
Chuck & Denny Doleac
Ms. Sandra Dombrowski
Mr. & Mrs. Scott Donaldson
Mrs. Kathleen Donley
Mr. Larry Dow
Ms. Dawn Draper
Mrs. Edna Dubbury
Mr. Richard J. Dumler
Mr. & Mrs. Dunfey
Ms. M. C. Dwyer & Mr. Michael Huxtable
Mr. V. William Eftim
Mr. & Mrs. John F. Egan
Martin & Pauline Elkin
Mr. & Mrs. Richard Elkinton
David & Priscilla Engel
Dr. & Mrs. Robert Englund
B. J. Entwisle
Mr. Edward Epremian
Mrs. Estes
Mr. Richard Eurich
Rev. John M. Evans
Stephen Faulkner
Mr. Harley Featherston
Ms. Hilary Feldstein
Patrice & Fred Ficken
Mr. & Mrs. George Findell, Jr.
Mr. C. D. Fink
George Fischer
Ms. Ruth Fischer & Mr. Rick Lugg
Ms. Rose Foley
Deborah Forte
Rep. Barbara C. French
Mr. W. Robert Frizzell
Mrs. Diana Frost
Ms. Cheryl Fry
Mrs. Pauline Gagne
Mrs. Dawn Gagnon
Mrs. Caroline B. GALE
Mrs. Eloise Gardner
Ms. Elsa Garmire & Mr. Robert Russell

Mr. Robert Garrison
Beverly & Bill Gere
Mr. & Mrs. Richard Giddings
Mr. Bruce Gillette
Mrs. John E. Glidden
Mr. & Mrs. Walter Goddard
Mrs. Ben Gooch
Andrew Goodchild
Mr. Charles Gordon
Mr. Thomas C. Gowen
Mr. A. Jay Graf
Dee & Art Grant
Mr. & Mrs. Douglas Grant
Mrs. Jeanne M. Grant
Mr. Gerard R. Gravel
Michele Gravely
Ms. Barbara A. Gray
Ms. Mary E. Green
Catherine & Charles Griffiths
Mr. Joseph A. Grimes, Jr.
Mrs. Rita E. Grote
Ms. Teresa Gudek
Charlotte Guisti
Mr. Paul Hackel
Mrs. Dorothy Hackett
Mr. Alphonse Haettenschwiller
Ms. Ann G. Haggart
Ms. Catherine E. Hahn
Ms. Barbara F. Hall
Mr. Thomas P. Hall
Mrs. Edith Ham
Scott & Kim Hamilton
Ms. Susan Hancox
Ms. Suzanne E. Harding
Mr. Robert Harrigan
Elizabeth Harrington
Mrs. Jacqueline Harwood
Lois & Richard Haskins
Mr. & Mrs. David Hatem
Thomas & Anne Havill
Ms. Janine D. Hawkes
Mr. Ross L. Heald
Mr. & Mrs. James Helm
Mr. David Hemenway
John & Erin Hennessey
Ms. Cynthia Herman
Cheryl Higgins
Thomas & Tamara Hindle
Mr. Mark Hodsdon
Mr. H.B. Hoepfer
Mr. Morton J. Hoffman
Corinne Hoge
Mrs. Richard Hollaman
Mrs. Carol Hollingsworth
Mr. & Mrs. Royal B. Holmes
Mr. & Mrs. Jon Holmstrom
WD Howells
Ms. Dardana Hoyt
Miss Paula M. Hoyt
Mr. Gregg R. Hunter
Mr. & Mrs. Henry Huntington
Mrs. Jean Ingwersen
Mr. & Mrs. Sandy

M. Isaacs
Mr. Edward Jackitis
Mr. Andrew Janetos
Francine & Roger Jean
Mr. William Jeffery
Mrs. Judith Jellinek
Edwood Jones
Mrs. Elizabeth Jones
Mr. Kenneth M. Jones
Ms. Madeleine Jones
Bill Joyce
Mrs. Edward P. Juranty
Ms. Verne Kaminski
Dr. & Mrs. Donald H. Kaplan
M. K. Kashiwabara
Mr. Samuel Kayajan
Mr. Bruce J. Keenan
Philip & Susan Keenan
Mrs. Vikki Kelan
David P. & Joanne K. Kelleher
Miss Wendy Keyes
Mr. & Mrs. Guy W. Kimball
Ms. Joan Kimball
Kingsbury Corporation
Mr. Brad Kinsey
Harold & Meredith Kjellman
Mr. & Mrs. Jeffrey C. Knapp
Mrs. Judith Knight
Ms. Sally Knowlton & Mr. Robert Chadbourn
Andrea Kokolis
Mrs. Rosemary P. Kostrzewski
Ms. Elizabeth Krajcik
Ms. Maureen Kuharic
Mr. Gerald Lalonde
Ms. Addie A. Lambarth
Mrs. Elizabeth A. Lapolice
Mr. John Larochele
Mr. Benjamin F. Larrick
Ms. Elizabeth Larsen
Mr. William R. Larsen
Mr. & Mrs. Richard H. Laskey
Charles & Mary Susan Leahy
Ms. Doris Leavitt
Elizabeth Lefebvre
Mr. Paul J. Lelievre
Constance & Deborah Lemay
Cathy Lenzen
Miss Jeannine T. Levesque
Ms. & Mrs. Robert Lewellen
Ms. Jaye E. Lewis
Linda Lewis
John & Marianne Litvaitis
Ms. Ingeborg Lock
Sherman & Barbara P. Locke
Rep. Priscilla P. Lockwood & Mr. Robert Lockwood
Peter Loeser
George & Debbie Long
Mrs. Shirley Longyear

Mr. & Mrs. Douglas Loudon
Col. William F. Luebbert & Mrs. Nancy C. Luebbert
Ms. Deborah Macinnis
Ms. Barbara Maloney
Ms. Alicia Mann
Ms. Jane Mansfield
Ms. Viola Margarones
Mr. & Mrs. Ernest Marin
Mr. & Mrs. Jon Marquis
Ms. Esther Martin
Mary Carella
Mrs. Lilo Masters
Mr. Roger V. Mathes
Mr. & Mrs. George R. Mathey
Ms. Dorothy Matthews
Mrs. Judy R. May
Ms. Ann L. Maynard
Mr. Douglas Maynard
Mrs. Ana M. Mayor
Hon. Steven J. McAuliffe
Miss Ruth P. McElroy
Pat & Glenn McKenzie
Mr. & Mrs. James T. McMahon
Ms. Lucy McVitty
Weber
Mr. Edward J. Mehigen
Mr. Melvin B. Meyer
Robert & Anne Micci
Dr. Clinton F. Miller & Ms. Laurel A. Miller
Mr. Raymond L. Miller & Ms. Judith E. Day
Ms. Norma M. Milne & Mr. Walter Zanchuk
Ms. Sally Mirsky
Dr. M. Jonathan Mischon
Ms. Sylvia S. Miskoe
Ms. Betsy Mitchell
Mrs. Barbara Moore
Ms. Irene P. Moore
Timothy E. Moore
Mr. Jack B. Moreau Jr.
Mrs. Mary Morley
Miriam Morrell
Mr. & Mrs. Leonard Morrissey
Ms. Alice Moulton
Ms. Karen Mountjoy
John & Kathleen Moyer
Doris & Richard Muffoleto
Ms. Barbara Muir
Mr. & Mrs. Dan Mullen
Jeanette Mulligan
Mr. & Mrs. Allan U. Munck
Mr. John Nelson
Bruce Ness
Mr. & Mrs. James C. Neundorf
Dr. Kristen Nevius
Susan Newberger
Mr. Steven P. Nickless
Annette Norton
Jonathan & Anne Nute
Ms. Elizabeth H. Nutt
Mrs. Kathleen O'Brien
Ms. Sharon Oikelmus

Mrs. Jean Ojemann
Mr. Joseph Oldfield
Dennis & Kathleen George O'Neil
John & Sandra O'Neill
Ms. Dorinda Ouellette
Mr. & Mrs. Gordon Page
Gloria Paicopoulos
Martha R. & Arthur M. Pappas, M.D.
Mr. & Mrs. Mark Parenti
Mrs. Beverly A. Parker
M. Sgt. York L. Parm, Sr.
Elaine Pasternack
Ms. Joanne H. Patton
Dr. Norman C. & Mrs. Melinda Payson
Bill & Sandie Peabody
Lynne Champion & Don Pearson
Gayle Perkins
Mr. Kevin Peters
Ms. Kathleen J. Phillips
Ms. Anne Pickard
Mr. & Mrs. Robert Pickles
Mrs. Margaret A. Pierce
Ms. Margaret Pilat-Roth
Dianne & John Pingree
Ms. Charlotte Pogue
Mrs. Rose Poirier
Mr. & Mrs. Lyman Pope, Jr.
Mr. Chris Poulin
Karen Preis
Janet Prince & Peter Bergh
Mr. Charles Raeburn
Edward & Priscilla Ramsey
Ms. Cynthia Ransom
Mr. James Rauscher
Carol Reagan
Mary Jane Reece
Ms. Dolores Reed & Ms. Kathleen M. O'Connor
Ms. Margaret Reeves & Mr. Armand Van Velthoven
Ms. Patricia Reigstad
Mrs. Renee Reiner
Mr. Edward Reynolds
Ms. Torunn Rhodes
Ms. Patricia B. Rice
Mr. Thomas E. Rice, Jr.
Ms. Gayle Richards
Dr. Barbara Ellsworth Richardson
Marion & Stephen Richardson
Mr. & Mrs. Royal Richardson
Ms. Joan M. Richmond
Ms. Melinda Richmond
Mr. F. D. Roberts
James Roberts
Ms. Janis Roberts
Ms. Nancy L. Roberts
Ms. Gloria Robinson
Mr. Thomas E. Rogers
Mr. Christian Roop

Mr. & Mrs. Sumner G. Roper, Jr.
Barbara Ross
Mr. & Mrs. Werner Rudenfeldt
Mr. Richard L. Rush
Mr. & Mrs. Gordon Russell
Ms. Janet Sanborn
Mr. & Mrs. David Sanderson
Mr. David Sawyer
Ms. Margot Schafflinger
Mrs. Joan Schlieben
Ms. Paula Schneider & Ms. Marjorie Sands
Mr. & Mrs. Richard D. Schubart
Ms. Margery Schulz & Ms. Marnie Schulz
Ms. Jan Schwartz
Janet Seekell
Mr. Robert J. Selig
Mr. & Mrs. Barrie Sellers
Sen. Jeanne Shaheen & Mr. William Shaheen
Mr. & Mrs. James Sheridan
Ms. Barbara Simon
Mr. & Mrs. Martin Singer
Mr. & Mrs. L. William Slanetz
Mrs. Mary-Leigh C. Smart
Mr. James Smith & Ms. Lenore R. Ekwurtzel
Mr. & Mrs. Stanton Smith
Mr. Thomas W. Smith III
Mr. & Mrs. Herbert Sneiderman
L. T. Spaney
Ms. Sally Stalker
Mr. David Steelman
Paul & Sharon Steinwachs
Ms. Linda Steneck
Stapp Family Fund
Ms. Joyce Stolarski & Mr. Paul Wells
Mr. William Stratton
Mrs. Barbara Strickland
Ms. Joan Sullivan
Teri Sullivan
Ms. Carolyn Sundquist
Al & Anne Suosso
Mr. & Mrs. Douglas Surgenor
Mr. Tracey T. Sweeney
Kurt & Elaine Swenson
Ms. Lois Swick
Ms. Ariel Taylor
Mr. Keith A. Taylor
Ms. Rae Taylor
Mrs. Ruth Taylor
Ms. Teach
Mr. Eric Teittinen
Ms. Mary Teryek
Ms. Kay Tetreu
The Moroze Family Fund
Ginna Thoma
Mr. Harmon Thurston

Mr. & Mrs. Ken Tiernan
Rebecca Timmins
Mr. Jonathan Titcomb
Ms. Penny Tobin-Boeckelman
Ms. Patricia Townsend
Dr. & Mrs. David L. Trumper
Mr. & Mrs. Henry D. Turner
Mark Turner
Mr. Frederick K. Upton
Ms. Sue Vachon
Ms. Veronica Vahsen
Mr. & Mrs. George Vallis
Ms. Elsie Van Buren
Mr. & Mrs. Michael Vanaskie
Mr. Milt Vargelis
Mrs. Robert C. Varney
Mr. & Mrs. Robin Verdier
Julie and John Ver Ploeg
Dr. Henry E. Vittum
Ms. Karen Wadsworth
Mr. Edward Walker
Ms. Brenda Wallace
Mr. Dan Walsh
Mr. James Walter
Jack & Pat Weeks
Ms. Judy Welke
Mrs. Barbara Werdelin
Mr. Paul Wilde
Ms. Cherylanne Williams
Ms. Diane Williams
Mr. Robin Willits
Ms. M. Elizabeth Williamson
Ms. Christine Wilson
Ms. Shirley S. Wilson
Mr. & Mrs. Steve Wineberg
Ms. Beverly Winn
Ms. Doris Winters
Mrs. Claire Woelflein
Mr. & Mrs. D. Austin Wood
Drs. Dorothy & Robert Wortmann
Ro & Bill Wyman
Dr. & Mrs. Ross G. Wyman
Mr. Peter Yaffe
Mr. & Mrs. Paul W/Young
Mr. & Mrs. Kimon Zachos
Mrs. Beverly Zampieri
Lee S. Jahнке & Rosemary A. Zurawel
Ms. Nancy Zurhellen
Anonymous (61)

Special Thanks

Ron Abramson's Run
JBrackett Creative

Printed by
RAM Companies

ONLINE ANYTIME • NHPTV.ORG

NHPTV PRIME • NHPTV EXPLORE • WORLD • CREATE

DIGITAL CHANNELS

11 Durham
34 Pittsburg
48 Littleton
49 Keene
50 Hanover

ANALOG 26 Colebrook

268 Mast Road,
Durham, NH 03824
(603) 868-1100

themailbox@nhptv.org

